



Open Auditions are open to all interested young musicians, ages 8-18, for all Napa Valley Youth Symphony ensembles each Spring and Fall. We will hold auditions on a rolling basis during the season depending on the needs of each ensemble.

This audition packet is for the **Youth Symphony**.

Ensemble Information and Audition Dates

Our audition dates and appointments are available at: <https://www.nvyso.org/info/audition>.

→ **Youth Symphony** (Level 3): Intermediate to Advanced Musicians. Ages 12 to 18.

◆ **Chamber Orchestra:** *Advanced Strings Musicians by invitation. Participation concurrent with Youth Symphony.*

New to our Auditions?

Please prepare the audition materials that are appropriate to your current playing level. Seek advice from your private teacher or music instructor about which level of audition materials is most appropriate to prepare based on your current skill level. If you do not have a private teacher or music instructor - ask us!

Advancing Musicians: For those already in an ensemble and would like to advance to a higher level of ensemble, discuss your interest to advance with your ensemble Director and prepare the scales and excerpts for the highest level ensemble in which you would like to play in.

Audition Requirements – YOUTH SYMPHONY

→ **Section I (Scales and Articulations):** Prepare all scales. You may choose one scale to begin this section of the audition. Other scales may be asked in addition to the scale you choose to play. Be prepared with the following articulation examples for the scale:

◆ Slur 2 Notes

◆ Marcato

◆ Slur 4 Notes

◆ Staccato

◆ Slur 8 Notes

◆ Double-tonguing

→ **Section II (Excerpts):** Please view and prepare the designated excerpts for your instrument.

→ **Section III (Solo Piece):** Please prepare one solo piece that demonstrates your most advanced abilities on your instrument. Make sure you work with your instructor on the piece so that you can play it well and feel comfortable playing it in front of others.

Sections I and II are attached for your practice prior to the audition. All auditions will be held with a panel of at least two adjudicators selected as appropriate for your level and instrument family. Only the musician is allowed to enter the room; parents/guardians may wait in the lobby area. Please expect auditions to be 10-15 minutes.

Audition Appointments

To request an audition appointment, please submit an audition request form at:

<https://www.nvyso.org/info/audition>.

Questions?

Please contact us at orchestra@nvysso.org.

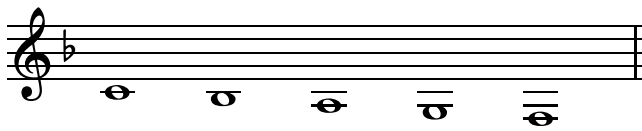
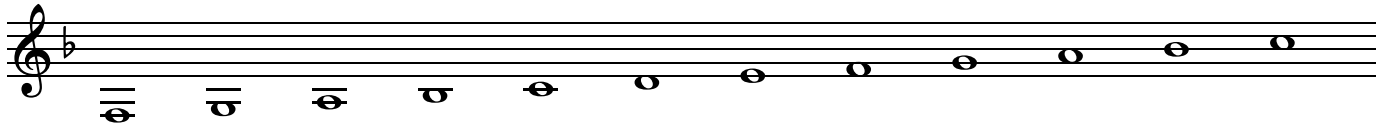


NAPA VALLEY YOUTH SYMPHONY

French Horn Level 3 Scales

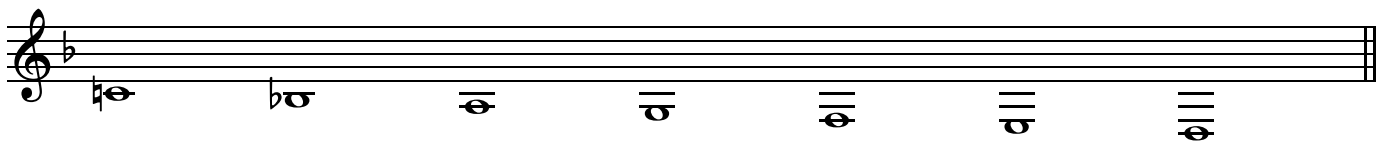
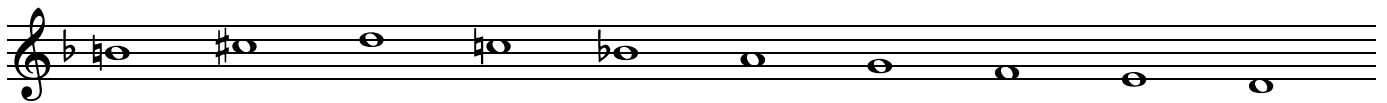
♩ = 120

Two octaves F (Concert Bb) Major



♩ = 120

Two octaves D (Concert G) Melodic minor



a) Slur 2

Musical staff for exercise a) Slur 2. The staff is in treble clef with a key signature of one flat (Bb) and a 4/4 time signature. The exercise consists of an ascending scale from G2 to G3 and a descending scale from G3 to G2, with slurs under every two notes.

b) Slur 4

Musical staff for exercise b) Slur 4. The staff is in treble clef with a key signature of one flat (Bb) and a 4/4 time signature. The exercise consists of an ascending scale from G2 to G3 and a descending scale from G3 to G2, with slurs under every four notes.

c) Slur 8

Musical staff for exercise c) Slur 8. The staff is in treble clef with a key signature of one flat (Bb) and a 4/4 time signature. The exercise consists of an ascending scale from G2 to G3 and a descending scale from G3 to G2, with slurs under every eight notes.

d) Staccato

Musical staff for exercise d) Staccato. The staff is in treble clef with a key signature of one flat (Bb) and a 4/4 time signature. The exercise consists of an ascending scale from G2 to G3 and a descending scale from G3 to G2, with staccato dots under every note.

e) Marcato

Musical staff for exercise e) Marcato. The staff is in treble clef with a key signature of one flat (Bb) and a 4/4 time signature. The exercise consists of an ascending scale from G2 to G3 and a descending scale from G3 to G2, with marcato accents (^ symbols) above every note.

f) Double-tongue

Musical staff for exercise f) Double-tongue. The staff is in treble clef with a key signature of one flat (Bb) and a 4/4 time signature. The exercise consists of an ascending scale from G2 to G3 and a descending scale from G3 to G2, with double-tongue dots under every note.

Musical staff for exercise f) Double-tongue. The staff is in treble clef with a key signature of one flat (Bb) and a 4/4 time signature. The exercise consists of an ascending scale from G2 to G3 and a descending scale from G3 to G2, with double-tongue dots under every note.



NAPA VALLEY YOUTH SYMPHONY

NVYS Horn Excerpts

Holst/Smith, In the Bleak Midwinter

In F **Maestoso** ♩ = 92

Musical notation for the first staff of 'In the Bleak Midwinter'. The key signature is one flat (F major/D minor), and the time signature is common time (C). The music begins with a dynamic marking of *ff* and includes several accents (>) over the notes.

5

Musical notation for the second staff of 'In the Bleak Midwinter', starting at measure 5. The key signature remains one flat. The music continues with a dynamic marking of *fff* and includes several accents (>) over the notes.

Bizet, L'Arlésienne Suite No. 2: Farandole

In F **Allegro deciso. Tempo di Marcia** ♩ = 104

Musical notation for the first staff of 'Farandole'. The key signature is one flat (F major/D minor), and the time signature is common time (C). The music begins with a dynamic marking of *ff*.

5

Musical notation for the second staff of 'Farandole', starting at measure 5. The key signature remains one flat. The music includes a dynamic marking of *ff* and a **Ritenuito** marking. The piece concludes with a double bar line and a change to a 2/4 time signature.

Dvorak, Symphony No. 9, 4th mvt.

In E **Un poco sostenuto.** ♩ = 112

p *dim.*

5

stringendo

p

8

molto cresc. *ff*

Dvorak, Symphony No. 9, 2nd mvt.

Largo ♩ = 52

In E *con sord.*

p

Dvorak, Symphony No. 9, 3rd mvt.

Molto vivace ♩ = 80

In E

9

17